



# SPACEWatch™ Storage Suite 5

## What is SPACEWatch Storage Suite?

Sharpeware's **SPACEWatch Storage Suite** is an integrated set of multi-platform and agent free enterprise storage management products.

SPACEWatch Storage Suite incorporates class leading file server, NAS/SAN and email storage management applications. The Suite gives customers powerful monitoring, analysis, reporting, management and archiving tools

SPACEWatch Storage Suite consists of a flexible set of building blocks to suite a range of requirements and organizational sizes:

- SPACEWatch Enterprise Edition
- SPACEWatch Small Business Edition
- SPACEWatch for Exchange
- SPACEWatch for Domino
- SPACEWatch ASM (Automated Storage Management)
- SPACEWatch ChargeBack.

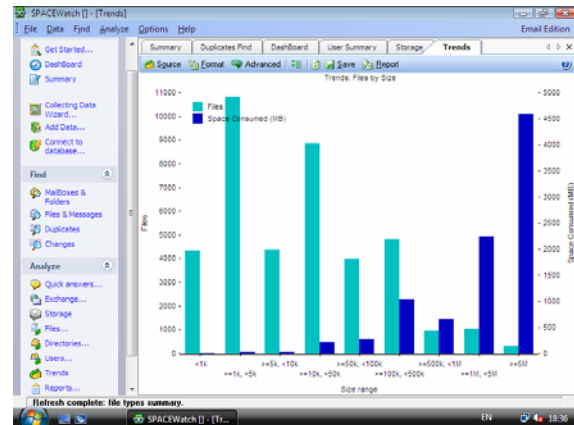
SPACEWatch Storage Suite has been developed with a modular approach in mind. You can utilize one or more modules from the suite and build up your storage management capability as your requirements change.

All modules exploit a scalable shared architecture which features easy to use space databases, task management and reporting.

All modules are available for free evaluation from Sharpeware.

## SPACEWatch Enterprise Edition

**SPACEWatch Enterprise Edition** is a multi platform storage monitoring, reporting and management tool suitable for even the largest organizations.



It is designed to allow you to carry out detailed analysis and management of your storage environment down to file level; across Windows, NetWare, Linux and UNIX.

SPACEWatch Enterprise Edition helps you to implement storage policies and monitor compliance. It provides instant trends in storage use including detailed storage utilization trends, allows detailed search and analyses and provides automated and comprehensive reporting.

With agent free deployment, a scalable SQL space database and a comprehensive Task Manager, SPACEWatch Enterprise Edition will help you automatically pinpoint misuse, plan for change and gain control over your storage environment.

Module	Scalable SQL space database	Task Automation	Automated file actions and VFolders	Charging & usage metrics	Advanced storage utilization analysis	Windows NetWare UNIX	Exchange mailboxes & public folders	PST files on file servers	Lotus mail & application databases	NSF files on file servers
Enterprise	✓	✓			✓	✓				
SBE	Built in database					✓				
Exchange	✓	✓			✓	✓	✓	✓		
Domino	✓	✓			✓	✓			✓	✓
ASM	✓	✓	✓			✓				
ChargeBack	✓			✓	✓	✓	✓	✓	✓	✓

## SPACEWatch Small Business Edition

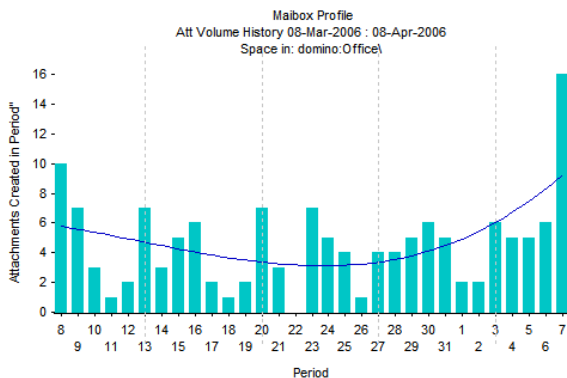
**SPACEWatch Small Business Edition** (formerly known as Network Edition) is a multi platform storage monitoring, reporting and management tool.

It is designed for the particular needs of smaller organizations or single departments, and allows users to carry out detailed analysis and management of their storage environment to file level on Windows, NetWare, Linux and UNIX.

SPACEWatch SBE helps you to implement storage policies and monitor compliance. It provides trends in storage use, allows detailed search and analyses and provides comprehensive reporting.

## SPACEWatch for Exchange

**SPACEWatch for Exchange** is an email storage management tool. It lets organizations carry out detailed storage analysis and management of Microsoft Exchange server mailboxes, public folders and PST files (including files and messages within the PST) – as well as file server storage.



SPACEWatch for Exchange allows you to implement email storage policies and monitor compliance. There is no need for agents on your Exchange servers and it works with messages, email attachments and documents across the entire infrastructure.

SPACEWatch for Exchange provides trends in storage use and allows search and analyses of duplicates, tree summaries and mailbox profiles.

## SPACEWatch for Domino

**SPACEWatch for Domino** is an email storage management tool. It lets organizations carry out detailed storage analysis and management of IBM Lotus Domino servers and Lotus Notes mail files and Notes databases as well as NSF files and their contents stored on file servers.

SPACEWatch for Domino allows you to implement email storage policies and monitor compliance. It works with Notes email attachments and documents as well as file server storage across the entire infrastructure.

It provides trends in storage use and allows search and analyses of duplicates, tree summaries and database profiles.



SPACEWatch for Domino 5 has been independently validated by IBM® as "Ready for IBM Lotus Domino software".

## SPACEWatch Automated Storage Management (ASM)

**SPACEWatch ASM** (Automated Storage Management) is an automated storage management and archiving tool.

ASM lets organizations automate their storage policies and improve storage compliance, performance and utilization. ASM allows you to automate the archiving, deletion, moving and copying of data across multiple platforms.

SPACEWatch ASM takes dynamic file sets and applies scheduled actions on these file sets. File sets can originate from any combination of Microsoft Windows, Novell Network, Unix, SAN or NAS infrastructure.

Using sophisticated automation techniques SPACEWatch ASM can be used to:

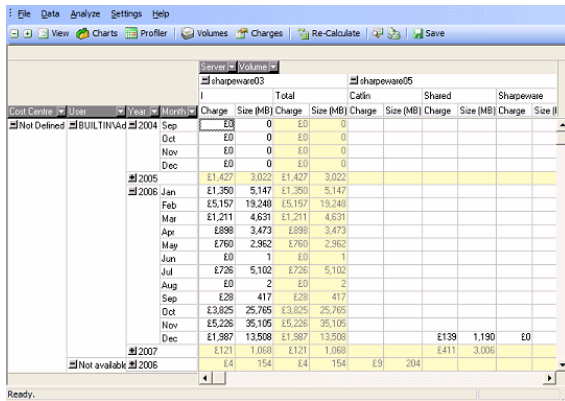
- Automate company storage policies
- Get a grip on storage compliance
- Archive or get rid of unwanted file types such as audio or video files
- Control users storage profiles
- Save space by consolidating duplicated files in one place
- Move unused files to cheaper storage
- Replicate new or updated files to another site.

SPACEWatch ASM can also be used to automate custom analysis and reporting.

## SPACEWatch ChargeBack

SPACEWatch ChargeBack is an interactive storage measurement and chargeback solution. It allows you to rapidly model many different chargeback approaches – all based on real storage use down to file level.

Chargeback approaches can be readily applied across all your servers, NAS and SAN – and you can include email storage use as well.



Flexible charging methods can be used to drive user behavior – for example, you can weight increasing cost penalties for storage of unused files or use of more expensive storage tiers.

The chargeback detail for your infrastructure is presented in one easy to use interactive and multi-dimensional data cube.

Charts of key data can be viewed and chargeback data either printed or exported to other applications for further analysis and presentation.

## Product Specifications and System Requirements

SPACEWatch Storage Suite 5 is a Microsoft Windows application. It will run on Windows 2000, Windows Server 2003, Windows XP or Vista.

It will work with existing Microsoft SQL Server or MySQL 5 database systems, or free Microsoft SQL Server Express.

On Netware systems you require a Novell Client and eDirectory authentication on the machine running SPACEWatch.

On Lotus Domino systems you require a Lotus Notes R5.0.2b or later client installed.

On Microsoft Exchange systems you require Outlook 98 or later or Exchange Admin Console or Exchange Server MAPI Client.

Why use SPACEWatch Storage Suite?	
Use	Benefit
Manage, monitor, analyse and report on file & print, SAN/NAS Storage	Maximise your storage investment and reduce waste Find storage/file duplication and free up space Monitor storage policies and prevent illegal usage Report on departmental, individual and device usage and drive behaviour
Compliance management	Police your storage usage and introduce standardisation
Email Storage management (including nsf/pst analysis)	Manage your email storage including mailboxes, folders, databases and nsf/pst's. Reduce email server and mail box downtime and find out where all those duplicated file attachments are.
Storage Archiving	Ensure your business continuity site contains the data you want, and don't waste resources replicating unnecessary data.
Migration planning	Use SPACEWatch for critical migration planning whether it be o/s or email migrations. Migrate only the data that you need to.
Storage Management Automation	Set your storage profiles by user, department or device and then automate your storage management.
Storage Auditing	Audit your users storage and find out what your users are doing with their storage