



What is SPACEWatch ASM?

SPACEWatch ASM (Automated Storage Management) is an automated storage management and archiving tool within the **SPACEWatch Storage Suite**. ASM lets organizations automate their storage policies and improve storage compliance, performance and utilization. ASM allows you to automate the archiving, deletion, moving and copying of data across multiple platforms.

SPACEWatch ASM takes dynamic file sets and applies scheduled actions on these file sets. File sets can originate from any combination of Microsoft Windows, Novell Netware, Unix, SAN or NAS infrastructure.

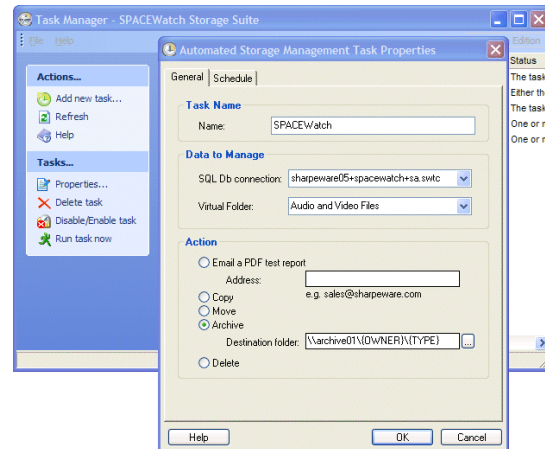
Using sophisticated automation techniques SPACEWatch ASM can be used to:

- Automate company storage policies
- Get a grip on storage compliance
- Archive or get rid of unwanted file types such as audio or video files
- Control users storage profiles
- Save space by consolidating duplicated files in one place
- Move unused files to cheaper storage
- Replicate new or updated files to another site.

How does SPACEWatch ASM Work?

SPACEWatch ASM works as an integral part of SPACEWatch Storage Suite, exploiting existing SPACEWatch space databases.

Using SPACEWatch you first define dynamic sets of files using SPACEWatch Virtual Folders. The contents of these folders are defined using rules such as “files of type mp3”, “unused for 6 months” or “new or updated in the last week”.



When a SPACEWatch ASM task is executed, the Virtual Folder contents is dynamically updated and the chosen file action applied.

File actions can include copy, move, delete – and archive.

With the archive file action SPACEWatch ASM will move files to a target location, and replace them with small link files so that users can still find them as necessary.

When a link file is opened, the remote file contents is retrieved.

With SPACEWatch ASM you can also define dynamic target locations for archived files – for example, archived files might be stored in different folders depending on file owner, last access or file type.

What are the Benefits and Applications of SPACEWatch ASM?

SPACEWatch ASM helps organizations make best use of their server and storage investments by automating a range of techniques for storage optimization.

Compliance and Policy Management

File servers and storage area networks that are not managed with SPACEWatch Storage Suite typically contain up to 20% unwanted files.

These files will typically contravene organization file server use policy, and may

also breach external regulations such as copyright or third party licence.

However – to quote Donald Rumsfeld – we “know there are known unknowns”. To remove unwanted files we must first find them with SPACEWatch Storage Suite; then we can use SPACEWatch ASM to remove them.

This whole process can be automated so that finding and removing unwanted files becomes a background task.

Finding unwanted files is easy with SPACEWatch’s Highlight Groups and Virtual Folders. These can be used to define an organization’s unwanted file policy, and to provide reports on current unwanted files levels; trends in growth; and the cause of those trends.

SPACEWatch ASM can then be used to move, archive or delete those unwanted files e.g. on a weekly or monthly schedule.

Maximise your storage investment

Its easy to find duplicates files with SPACEWatch Storage Suite – but manually dealing with them can be time consuming.

Instead, SPACEWatch ASM lets you automatically archive *and* remove duplicates at the same time.

It does this by examining existing files in your target archive location and replacing existing file duplicates with links to these target files where it can.

In this way only one copy of a set of duplicates actually gets archived.

Using SPACEWatch ASM you can automatically migrate unused files to cheaper

disk, and then if files remain unused you can then archive to tape or delete them at your leisure.

This multi-tiered approach means your users still have ample opportunity to discover a use for all that data – but without the headache of having to treat it with the same priority as essential files.

Replicate data to other sites

Do you want to get finer grained control over what data gets replicated to your DR site? Perhaps you want to replicate only certain types of new or updated files – or those owned by particular users.

With SPACEWatch ASM you can create tasks to copy data based on sophisticated Virtual Folder definitions.

Product Specifications and System Requirements

SPACEWatch ASM is a Windows application. It will run on Windows 2000 Professional, Windows Server 2003 or XP.

You must also have a licence for SPACEWatch Enterprise, SPACEWatch for Domino or SPACEWatch for Exchange

Why use SPACEWatch ASM?	
Use	Benefit
Delete defined set of files automatically	Get rid of unwanted files that don't meet your organization's storage policy, like MP3 audio files.
Replace duplicates with links to one copy of the data	Consolidate your duplicates to one location without removing access from many sources, freeing up storage without disrupting users
Implement a three-tier storage strategy	Migrate unused files to secondary storage, then archive or delete them if they remain unused. Don't waste money on primary storage and its backup.
Replicate to your BC site	Ensure your business continuity site contains the data you want, and don't waste resources replicating unnecessary data.