



## SPACEWatch for Domino 5

Product Guide

### What is SPACEWatch for Domino?

**SPACEWatch<sup>tm</sup> for Domino** is an email storage management tool within the **SPACEWatch Storage Management Suite**. It lets organizations carry out detailed storage analysis and management of IBM Lotus Domino servers and Lotus Notes email databases (nsf files and their contents) stored on file servers.

SPACEWatch for Domino allows you to implement email storage policies and monitor compliance. It works with files, Notes email attachments and documents across the entire infrastructure. It provides trends in storage use and allows search and analyses of duplicates, tree summaries and database profiles.



SPACEWatch for Domino 5 has been independently validated by IBM® as “Ready for IBM Lotus Domino”.

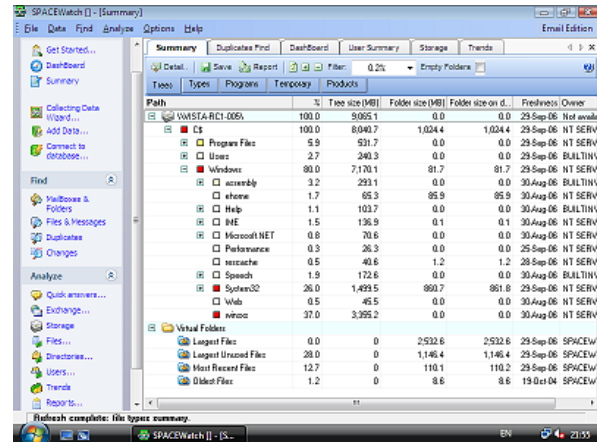
### How does SPACEWatch for Domino Work?

SPACEWatch for Domino can be easily configured to automatically maintain a SQL database of storage data. This database can then be used by multiple SPACEWatch for Domino users for fast and interactive search, analysis and reporting with even the largest Domino infrastructure.

SPACEWatch for Domino uses a local copy of Lotus Notes to access the IBM Lotus data. It can be installed on one or more PCs or Windows servers for storage database maintenance and automated report generation.

Typical search and analysis carried out by users include:

- Dashboard of key storage parameters
- Summary data such as tree sizes and file types
- File attachment duplicates
- Storage use by user and group
- Trends over time or size
- NSF analysis
- Mailbox profiles e.g. growth in storage use or file attachment creation over time.



SPACEWatch for Domino has an easy-to-use user interface with multiple levels of data “drill down” linking the various tools.

### What are the Benefits and Applications of SPACEWatch for Domino?

SPACEWatch for Domino helps organizations make best use of their IBM Lotus Domino investments by quickly pinpointing how servers are being used to store files and documents.

It provides the following:

- An automated solution for consolidated email storage management
- Interactive performance levels for search and analysis across the entire organization – without the need for direct access to the Domino infrastructure
- A market-proven and mature technology easily extended by end users
- Ease of use validated by thousands of deployments
- Full compatibility with IBM Lotus Notes and Domino R5 and later.

*None of alternatives we reviewed offered the data and file management functions of Sharpeware's SPACEWatch for Domino. Specifically they failed to adequately address data cleanup, consolidation and reporting functions.*

- Gordon McKeown  
Sectors and Services Manager  
Targeting Innovation

SPACEWatch for Domino enables customers to rapidly realize sophisticated email storage challenges that would otherwise prove impractical, including:

**Anticipate problems—before they affect service**

Users are sending ever more and bigger emails. File attachments grow in size and number.

And the situation is no better on file servers. Users duplicate file attachments and create ever growing archive NSF files.

The same data is duplicated in many places and often consists of files that shouldn't be there—like mp3's or jpegs.

Eventually even the best planned and implemented infrastructure fills up, slows down and ultimately fails unless it is actively monitored.

SPACEWatch for Domino will routinely monitor your storage to file, message and attachment level-on Domino – and on Windows or Netware file servers as well.

You can automate the generation of the reports your want and have them sent by email for your review.

Carry out routine exception reporting and quickly see what's changed. Sophisticated historic and profile analysis show you growing changes over time.

When you see areas that warrant further investigation you don't need to wait for more data to be gathered—just point and click to get the underlying detail straight away.

And you don't need to spend time analysing

your servers individually. Take an enterprise view and quickly see where you need to concentrate further effort.

**Carry out migration and consolidation projects with confidence**

Many migration and consolidation projects fail before they even start due to lack of detailed data about the existing infrastructure.

With SPACEWatch for Domino you and your team can easily get the data you need—without resorting to costly audit consultants.

And because that data is constantly updated you can easily plan clean-up tasks before you start—then immediately measure the benefit.

You can find out the extent to which users are complying with standards, or get the data to establish pragmatic new standards.

Understand how storage is being used across Domino, Windows, Netware, UNIX and SAN/NAS before committing to costly change activities.

**Product Specifications and System Requirements**

SPACEWatch for Domino is a Windows application. It will run on Windows 2000 Professional, Windows Server 2003 or XP.

IBM Lotus Notes R5.0.2b must be installed on the same system (but does not need to be running).

SPACEWatch for Domino will manage storage on IBM Lotus Domino R5 or later, NSF files, and files stored on Windows, NetWare or UNIX file servers.

Why use SPACEWatch for Domino?	
Use	Benefit
Implementing your Compliance and/or ILM strategy	Find hot spots in storage use across all your Domino servers and Notes Databases. Highlight trends in use and make informed decisions.
Carry out migration and consolidation projects with confidence	Easily get the data you need before you start—without resorting to costly audit consultants.
Anticipate problems—before they affect service	Routinely monitor how files, message and attachments are impacting your storage – and the cause of change.
Resolving problems quickly	Carry out instant search and analysis wherever files are stored – even when servers cannot be accessed.