



## SPACEWatch for Exchange 5

Product Overview

### Email Analysis – Compliance – Storage

**SPACEWatch<sup>tm</sup> for Exchange** is a comprehensive email storage management tool, enabling detailed storage analysis and management of Microsoft Exchange server mail boxes, folders and PST files (including files within the PST).

Part of the **SPACEWATCH Storage Management Suite**, SPACEWatch for Exchange allows you to implement email storage policies, monitor compliance and allocate cost against email usage. Easy to deploy and use, SPACEWatch for Exchange does not require agents on your servers and works with enterprise-wide files, email attachments, and documents. With SPACEWatch for Exchange you can quickly identify storage use trends, allocate costs against email storage usage and search and analyze duplicates, tree summaries and database profiles.

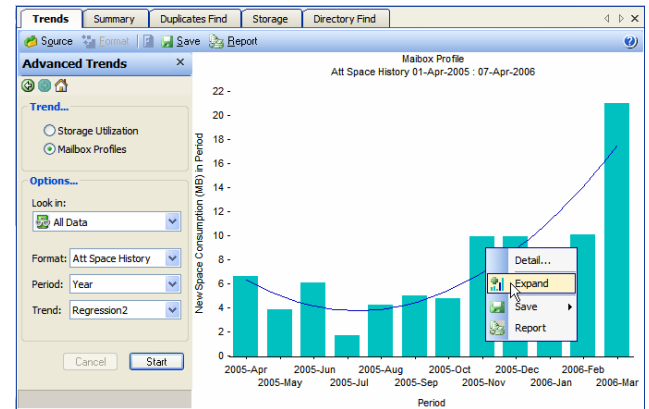
### It's Easy

SPACEWatch for Exchange can be easily configured to automatically maintain an SQL database of storage data. This database can then be used by multiple SPACEWatch for Exchange users for fast and interactive search, analysis and reporting with even the largest Exchange infrastructure.

Using a local copy of Exchange to access the Exchange data, SPACEWATCH for Exchange can be installed on one or more PCs or Windows servers for storage database maintenance and automated report generation.

Your search and analysis capabilities include:

- Key storage parameters dashboard
- Summary data: tree sizes and file types
- File attachment duplicates
- User and group storage use
- Usage cost analysis
- Trends over time or size
- PST analysis
- Mailbox profiles (e.g. storage use, file attachment history)



SPACEWatch for Exchange features a user-friendly interface with multiple levels of data drill downs linking various tools.

### Optimize Your Investments

SPACEWatch for Exchange helps optimize your Microsoft Exchange investments by enabling you to quickly pinpoint how servers are used to store files and documents.

SPACEWatch for Exchange delivers:

- Automated and centralized email storage management
- Enterprise-wide interactive KPIs for search and analysis – without the need for direct access to the Exchange infrastructure
- Email storage cost charging profiles
- Market-proven and mature technology easily extended by end users
- Intuitive ease of use
- Full compatibility with Microsoft Exchange 5.5 and later.

*"No other vendor came close to the data and file management capabilities in SPACEWatch for Exchange – it meets all of our data cleanup, consolidation and reporting needs."*

Gordon McKeown  
Sectors and Services Manager  
Targeting Innovation

Why use SPACEWatch for Exchange?	
Use	Benefits
Compliance and Regulation	<ul style="list-style-type: none"> <li>▪ Monitor and manage and your compliance and regulatory obligations</li> <li>▪ Create compliance accountability</li> <li>▪ Identify email storage hot spots use across all your Exchange servers</li> </ul>
Email storage Administration	<ul style="list-style-type: none"> <li>▪ Manage enterprise email storage</li> <li>▪ Produce detailed reports on mail box/database use, illegal file types (e.g. .mps, .jpegs, etc.)</li> <li>▪ Automate email use reporting to users, managers, budget holders</li> <li>▪ Identify trends and profile changes</li> </ul>
Email Storage Charging	<ul style="list-style-type: none"> <li>▪ Implement charge-back policies for email usage by user/department/business unit</li> <li>▪ Control departmental budgets</li> <li>▪ Distribute equitable storage capacity</li> </ul>
PST File Analysis	<ul style="list-style-type: none"> <li>▪ Analyze PST files and contents</li> <li>▪ Examine PST file attachments</li> <li>▪ Control file size distribution</li> </ul>
Storage Policy Automation	<ul style="list-style-type: none"> <li>▪ Create enterprise-wide policies</li> <li>▪ Generate consistency</li> <li>▪ Automate email storage policies</li> </ul>
Migration & consolidation	<ul style="list-style-type: none"> <li>▪ Easily access data required before starting migration programs</li> <li>▪ Eliminate costly audit consultants</li> </ul>
Risk Management	<ul style="list-style-type: none"> <li>▪ Anticipate storage issues</li> <li>▪ Routinely monitor file, message and attachments</li> </ul>
Problem Resolution	<ul style="list-style-type: none"> <li>▪ Execute instant file search and analysis</li> <li>▪ Locate files that cannot be accessed</li> <li>▪ Eliminate storage abuse</li> <li>▪ Control storage consumption</li> </ul>

## Product Specifications and System Requirements

SPACEWatch for Exchange is a Windows application, compatible with Windows 2000, Windows Server 2003 or Windows XP. It does not need to be installed on your Exchange server, but you also need any one of the following installed on the same system: Microsoft Outlook 98 or later; Microsoft Exchange Admin Console; or Microsoft Exchange Server MAPI Client.

SPACEWatch for Exchange will manage storage on Microsoft Exchange 5.5 or later, PST files, and files stored on Windows, NetWare or UNIX file servers.

### About Sharpeware Ltd.

Founded in 1994, Sharpeware Ltd. is a leading provider of multi-platform email analysis and storage management solutions for medium-sized and large enterprises. SPACEWatch Storage Management Suite, the company's open-architecture flagship offering, is used by hundreds of customers at forward-thinking businesses and universities including Accenture, Goldman Sachs, Harvard University, Pfizer, and Stanford. A certified partner of Microsoft, Novell and IBM, Sharpeware has worldwide headquarters in Peebles, Scotland with US offices located in Branton, Florida, and partner offices throughout North America, Asia and Europe. Visit [www.sharpeware.com](http://www.sharpeware.com) or call +1 800 706 2939.